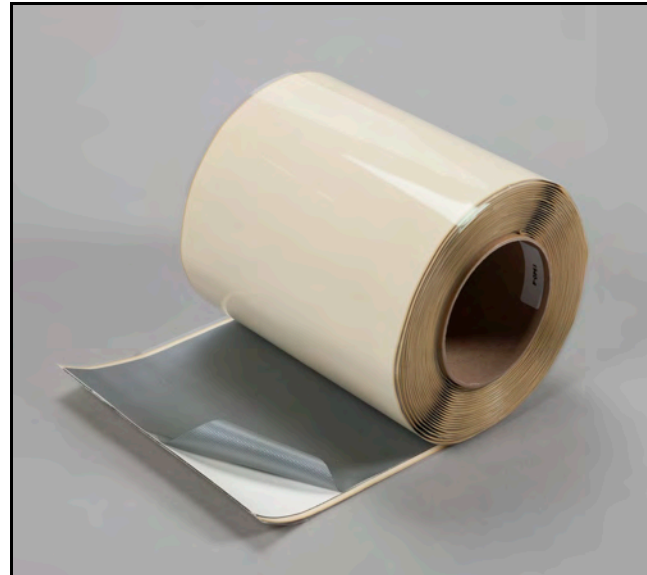


RPI Re-Flex EPDM Uncured Flashing Data Sheet

Technical Data	
Re-Flex Tape	
Physical Properties	Minimum Performance
Color:	White
Solids Content:	100%
Base	Rubber Polymer
Cure State	Cured
Width:	12 1/4" ± 1/8" (inch)
Solvents:	None
Length:	50' (feet)
Thickness	0.025" ± 0.007"
Re-Flex Uncured Membrane	
Physical Properties	Minimum Performance
Color:	White
Solids Content:	100%
Base:	EPDM
Cured State:	Uncured
Width:	12" ± 1/8" (inch)
Length:	50' (feet)
Solvents:	None
Thickness:	.060" ± 0.005"



DESCRIPTION:

RPI Re-Flex Uncured Flashing is a moldable white Uncured EPDM membrane laminated to RPI Re-Flex Seam Tape. It is used to flash outside corners, t-joint and radical bend patches, pipes, and other flashings outlined in the RPI Specification Manual. For more information, refer to the RPI Detail section of the RPI Specification Manual.

APPLICATION INSTRUCTIONS:

Refer to the RPI Fully Adhered EPDM/TPO Application Handbook or RPI Specification Manual for detailed application options.

1. Clean all surfaces to be flashed. Remove all dust, dirt, debris, and loose material from substrate. The surface must be completely dry.
2. Using an RPI Scrub Pad, apply Re-Flex Primer Activator to the substrate or membrane surface using back and forth strokes. Do not apply in a circular motion. Apply the Primer until the surface dries to a flat, smooth surface color.

NOTE: Primer/Activator should only be applied using RPI Scrub Pads.

Cool Weather Application:

During cloudy, cool conditions, (60° F and falling)the use of a heat gun may be necessary to warm the Flashing membrane to a more pliable state.

a. Cool Sunny Days:

When laying out the Flashing membrane on the roof, lay the flashing paper side up (brown) to absorb solar heat.

b. Hot Sunny Days:

Lay out the membrane Flashing side up (white) to keep the Flashing from overheating.

Refer to RPI Specification Manual for specific details.

Information stated on this Roofing Products International, Inc. Data Sheet is intended to provide basic guidance as to storage, application, coverage, shipping, and other product data. Information is subject to change without notice. For more information regarding this product, refer to RPI MSDS, and the RPI Specification Manual. As neither Roofing Products International, Inc. nor its representatives practice structural engineering or architecture, RPI disclaims any responsibility and offers no opinion as to the structural soundness of any structure on which its products may be applied. The building owner should obtain the services of a competent structural engineer before proceeding. RPI accepts no responsibility for any structural failure or resultant damages. No Roofing Products International, Inc. representative is authorized to vary this disclaimer.

NOTE: The foregoing information is published as general information only. The listed properties and performance characteristics are approximate values and are not part of the product specification.

PRODUCT CODE:

UTW 1225, UTW 1250, UTW 6100

PACKAGING:

Size	Weight	Carton	Pallet
12"X50' roll	25 lbs.	One per carton	36 cartons/pallet

RECOMMENDED STORAGE:

1. Store in original unopened containers at temperatures between 60° F (15.6°C) and 80° F (26.7° C).
2. Do not store on rooftop in direct sunlight. Keep product temperature below 80° F.
3. When stored in cooler temperatures, allow material to warm to room temperature (approx. 60° to 80° F before using).
4. Rotate stock. Do not use product past 6 month shelf life.

PRECAUTIONARY DATA:

1. Do not use product after expiration date. Refer the RPI Specifications and MSDS data prior to application of RPI Re-Flex Primer/Activator.

SHELF LIFE:

1. When stored in original unopened containers at temperatures between 60° F (15.6°C) and 80° F (26.7° C), a shelf life of 6 months can be expected.
2. The expected shelf life can be shortened if product is stored in temperatures exceeding recommended storage levels.